

A photograph of an industrial robotic cutting machine, the Elitron KOMBO SDC+, is shown in the background. The machine is a large, grey, boxy unit with a blue overlay on its side. It is positioned over a large sheet of material, likely paper or thin plastic, which is being cut. The machine's arm and cutting head are visible, and a flexible, corrugated hose is connected to the top. The background is a clean, industrial setting with a light-colored wall and floor.

KOMBO SDC⁺

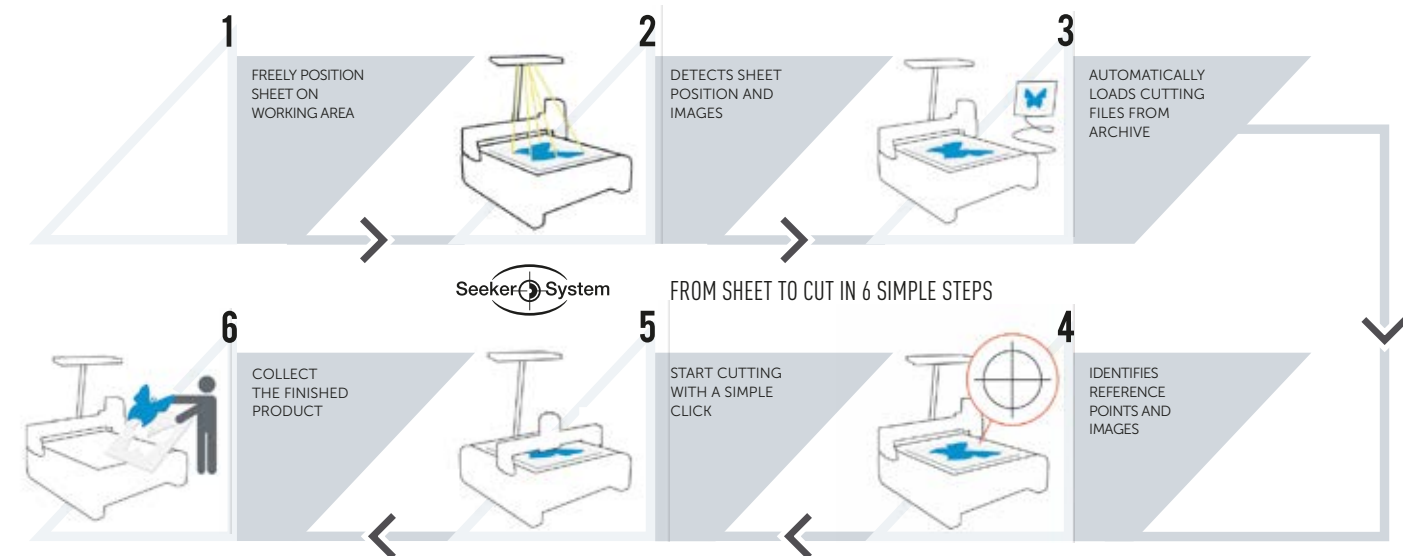
**AUTOMATIC CONVEYOR CUTTING
PLOTTER** ELITRON TECHNOLOGY
SEEKER SYSTEM

KOMBO SDC⁺

MORE PERFORMANCE
MORE SPEED
MORE PRODUCTIVITY

Kombo SDC⁺ is designed by Elitron to integrate and automate the workflow with increasingly popular super wide format digital printers. Extremely flexible, this **conveyor cutting system** is ideal for both banner and rigid material.

Competitiveness is increasingly based on **delivery time** and **flexibility** with small/medium production runs. Kombo SDC⁺ perfectly allows you to effectively work both large rolls of material and many different types of rigid media with an excellent quality-price ratio.



KOMBO SDC⁺

Unique Know-How

Highly advanced technical know-how produces state-of-the-art integrated solutions and applications for individual customer workloads.



Reliability

Robust structure
System built to **last the test of time**, for an **industrial workload**.

Automatic tool pre-setting
• **Greater precision** and cutting **quality**.
• **Simple and fast** tool changeover.



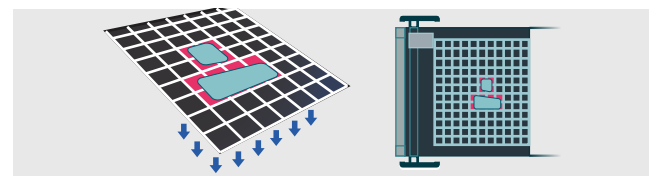
Versatility

Multi-tool cutting head
• **To work different materials** during the same working session.
• Can be equipped with up to **5 tools simultaneously**.

Different material height
Creases, cuts and mills materials **up to 50 mm** in height.

Holding clamp
• Ensures all roll material is precisely fed onto the working area.
• Better cutting results.

Performance



Vacuum power
• Working area made up to **36 concentrated vacuum sectors**.
• Maximum grip and cutting quality even on critical materials.

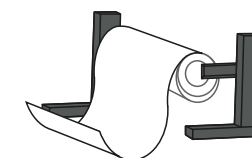
New motors
• Speed: **102 m/min**, acceleration **1,4 G**.
• Increased performance and reliability.
• Faster finishing even on high density materials.

High precision rack movement
• Ensures high production speed even with repeatability of job over continuous cycles.



Management of banners and tarps

Possibility of processing jumborolls and managing files and large-format pieces with in SplitBox mode.



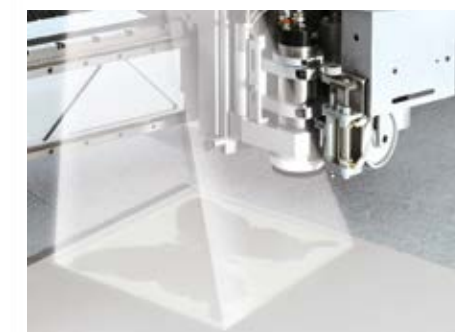
Unique Advanced Automation

- Compatible with **Industry 4.0**.

Seeker System PRO

Cutting edge technology patented by Elitron for **automatic detection of printed images** and reference marks.

- **Extremely user-friendly** and **significantly saves time** as material can be placed freely on the working area.
- The **dual camera** system **identifies the printed images** on the material and, using **Elitron's exclusive software**, **automatically loads the corresponding individual cutting files**.
- A real **"eye"** on the cutting system that functions independently, and automatically aligns and **corrects any distortion and printing errors**.



Video Projection system

The digital die cutting path is projected onto the material on the cutting table and the operator can freely nest/place the digital die to make best use of the material.

- Use of otherwise waste material.
- Optimization of the working area and consequently reduced consumption.

PROCESSABLE MATERIALS

Maximum flexibility for materials used in visual communications and packaging, including super wide format.

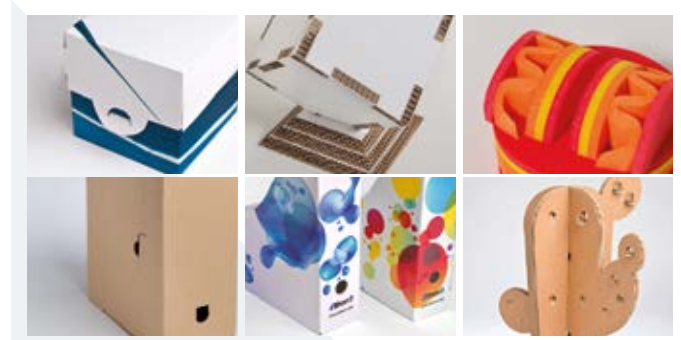
- Forex
- Dibond
- PVC
- Plastics
- Films
- Textile
- Honeycomb paperboard
- Paper and cardboard
- Corrugated cardboard
- Foams
- Plexiglass



APPLICATIONS

Unlimited possibilities to give your creativity a free rein and ensure you satisfy your clients requests to a tee.

- Packaging
- POS displays
- Transparent containers
- Advertising banners
- Folders
- Binders
- Boxes
- Embossed logos
- Promotional trade fair stand panels
- Promotional flags
- Brochure holders
- Many other applications



TECHNICAL INFORMATION

	KOMBO SDC+ 21.32		Kombo SDC+ 31.32
Version	Standard	With video projection *	Standard
Working Area (mm)	2100 x 3200		3100 x 3200
Suction sectors on working area	24		36
Machine dimensions (mm)	3200 x 4200	3600 x 5250	4150 x 4200
Machine height (mm)	1600	3400	1600
Working area height (mm)	900		900
Electric power supply 1kW	Tri-phase 400V 50/60Hz 14kW		Tri-phase 400V 50/60Hz 14kW
Electric power supply 3kW	Tri-phase 400V 50/60Hz 17kW		Tri-phase 400V 50/60Hz 17kW
Pneumatic power supply	10 bar 600l/min		10 bar 600l/min

* Optional.

The technical specifications in the table may be updated and modified, following any improvements and technological developments.

The images shown are for illustration purpose only.



HEAD OFFICE
Elitron IPM srl
 Viale I Maggio, 42
 63813 Monte Urano (FM) Italy
 ☎ +39 0734 842221
 elitron@elitron.com
www.elitron.com

USA BRANCH
Elitron America Inc.
 1650 Oakbrook Dr. Ste 425
 Norcross, GA 30093 USA
 ☎ +1 (844) 354-8766

Elitron 
 ROBOTIC CUTTING INTELLIGENCE